



Features

Novibra® type SAW mountings consist of a cylindrical shaped rubber section with integrally bonded interleaf metal plates bonded to two square heavy duty outer metal fixing plates. Designed for large compressive forces with minimum deformation, while providing low shear stiffness rates.

The combination of a stable low installation height, high compressive strength and low shear stiffness makes Novibra® type SAW a versatile high performance anti-vibration mounting. Ease of installation due to 4 clearance holes in each fixing plate.

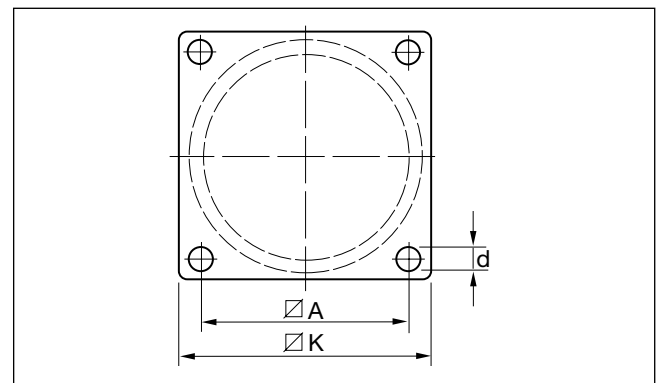
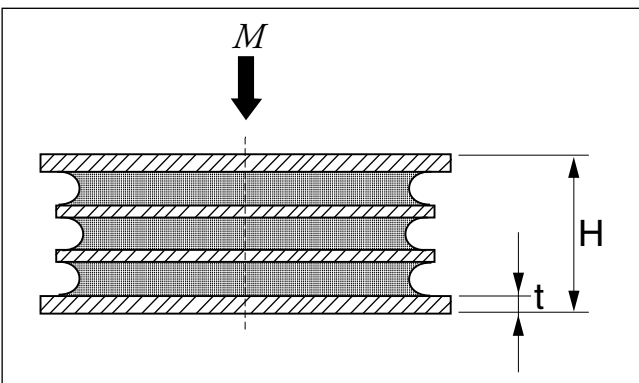
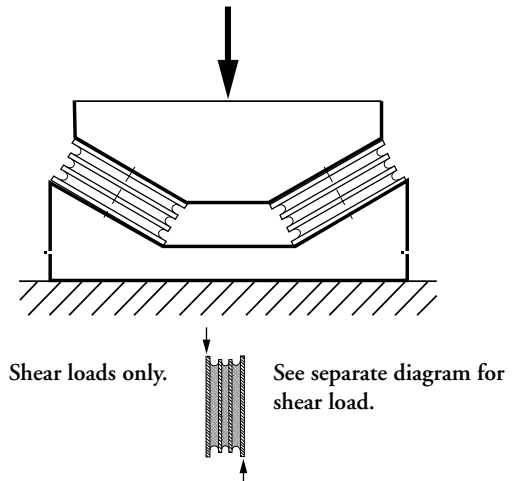
Novibra® type SAW

Novibra® elements type SAW are heavy duty mountings for static and shock loads in compression. Provides high isolation in the horizontal shear direction.

Typical fields of application are:

- Crushers
- Edge runners
- Mills
- Hoppers and feeders
- Grinders
- Vibratory rollers
- Screens
- Other very heavy machines and equipment

By connecting 2 SAW-elements in series, i.e. one on top of the other, an increased isolation efficiency is achieved in both shear and compression planes. Where larger deflections are required in the vertical plane, Novibra® type SAW mountings are mounted at a calculated angle configuration to provide the optimum spring rate.



Type	Part no. 40° IRH	Part no. 60° IRH	Dimensions in mm					Weight (kg)	M-Max(kg)	
			A	K	H	d	t		40° IRH	60° IRH
SAW 125	10-00141-01	10-00142-01	118	148	52	13.5	5	2.6	2250	4500
SAW 150	10-00143-01	10-00144-01	136	166	63	13.5	6	4.1	3750	7500
SAW 200	10-00075-01	10-00076-01	184	220	82	17.0	8	9.2	6000	12000
SAW 300	10-00077-01	10-00078-01	270	310	120	22.0	10	27.0	15000	30000

SAW

Note: The natural frequencies and degrees of isolation are based on dynamic characteristics of the mountings.

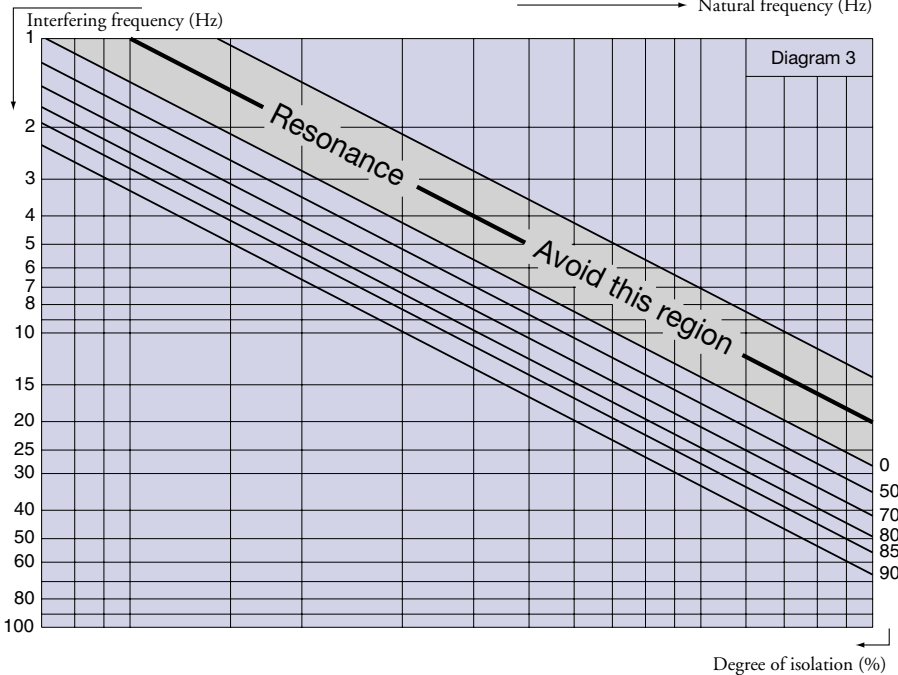
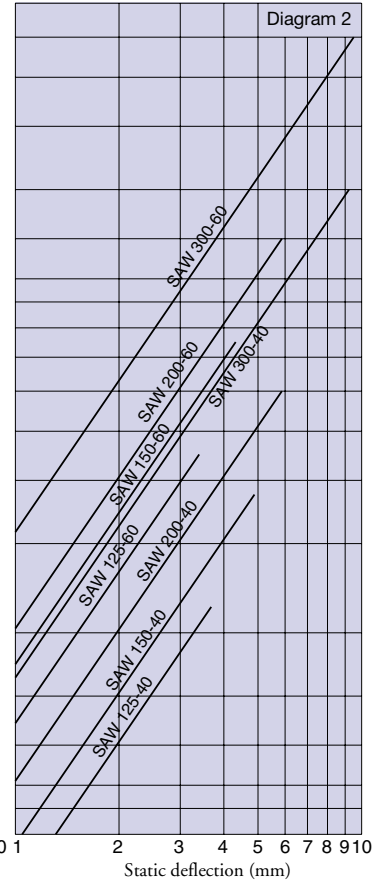
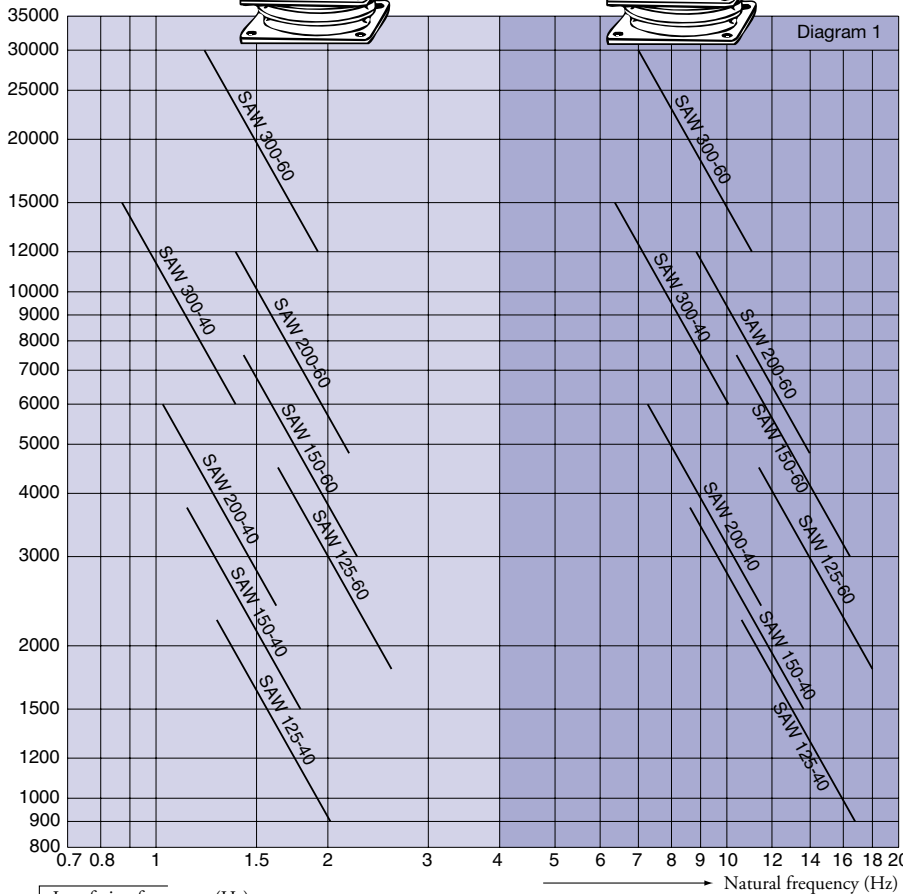
Load per mounting (kg)

Horizontal vibration

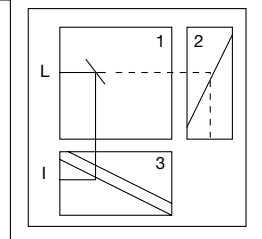
Vertical load

Vertical vibration

Vertical load



To select correct mounting, following data are needed:
 1) Load per mounting (kg)
 2) Interfering frequency (Hz)
 ($\text{Hz} = \text{rpm} / 60$)
 Select correct load line in diagram 1 and correct interference line in diagram 3. The load line intersects with required type of mounting (both vertical and lateral vibration plane). Connect this intersection point vertically down to the interference line in diagram 3. Here, on the sloping curve, the isolation degree is indicated. For static deflection, see diagram 2.

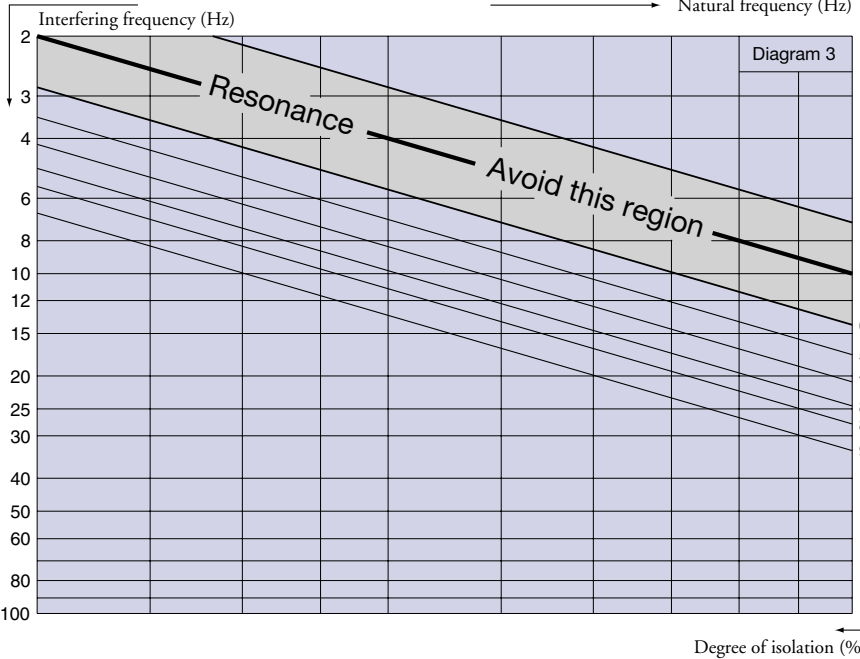
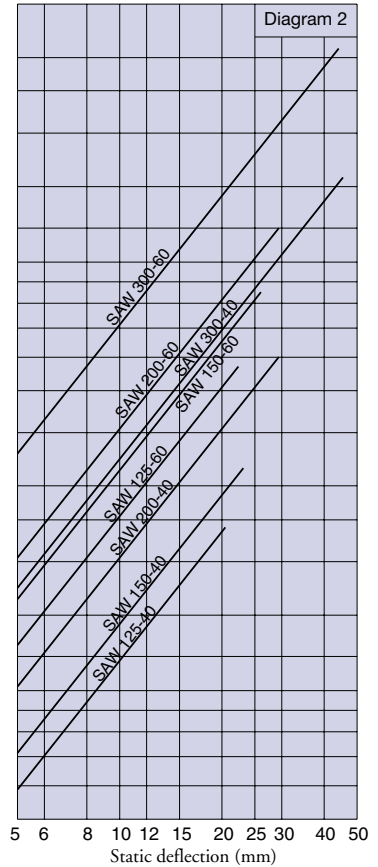
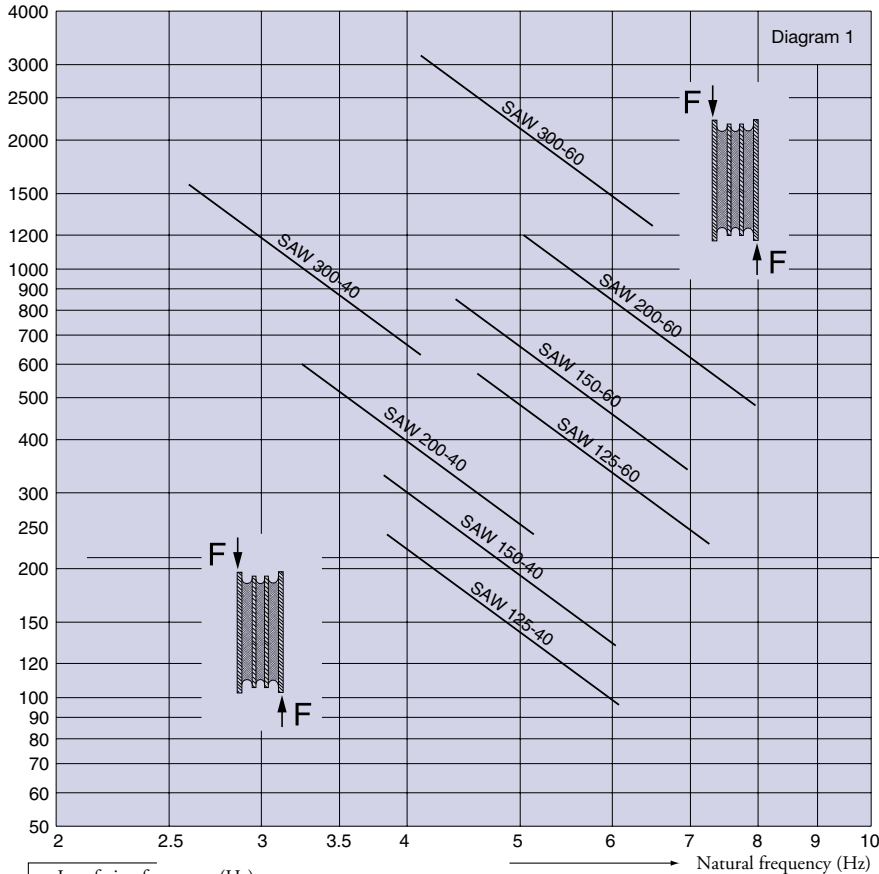


Note: The natural frequencies and degrees of isolation are based on dynamic characteristics of the mountings.

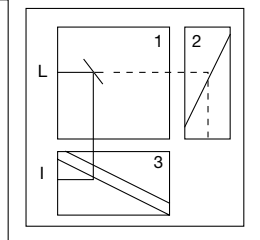
This page refers to shear load characteristics only!

F max (kg)	40° IRH	60° IRH
SAW 125	240	570
SAW 150	330	850
SAW 200	600	1200
SAW 300	1575	3150

Load per mounting (kg)



To select correct mounting, following data are needed:
 1) Load per mounting (kg)
 2) Interfering frequency (Hz)
 ($\text{Hz} = \text{rpm} / 60$)
 Select correct load line in diagram 1 and correct interference line in diagram 3.
 The load line intersects with required type of mounting (both vertical and lateral vibration plane).
 Connect this intersection point vertically down to the interference line in diagram 3.
 Here, on the sloping curve, the isolation degree is indicated.
 For static deflection, see diagram 2.



● Rectangular SAW Mountings



Features

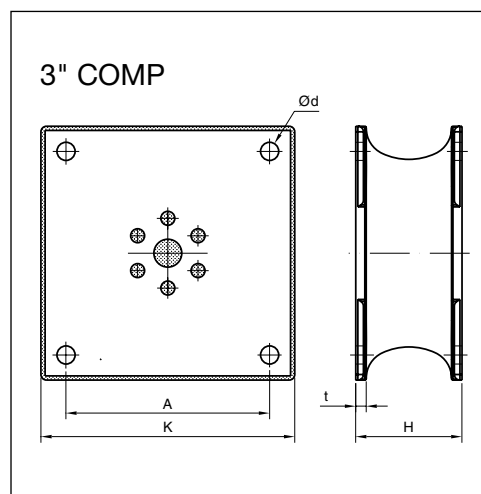
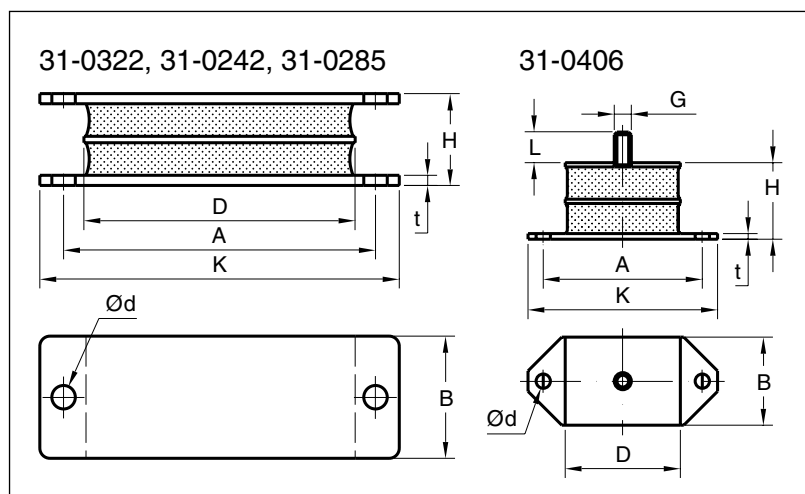
Rectangular SAW mountings are also known as 'Sandwich' mountings because they feature a rubber section sandwiched between plates of metal. This arrangement allows a large difference between the compression and shear stiffnesses, thus providing the potential to 'tune' a mounting system by rotating the mountings. These mountings are commonly installed in a 'Vee' formation to utilise this feature.

The Rectangular SAW Mountings has the following features:

- Available with plate or stud fixings.
- Can be loaded in compression or shear, or a combination of both, for example in a 'Vee' arrangement.
- Can be manufactured with or without interleaves to change the ratio of shear to compression stiffness.

Metalastik[®] type Rectangular SAW Mountings and Novibra[®] type 3" COMP

Widely used for suspending engines on road vehicles and may also be employed as springs for vibratory equipment.



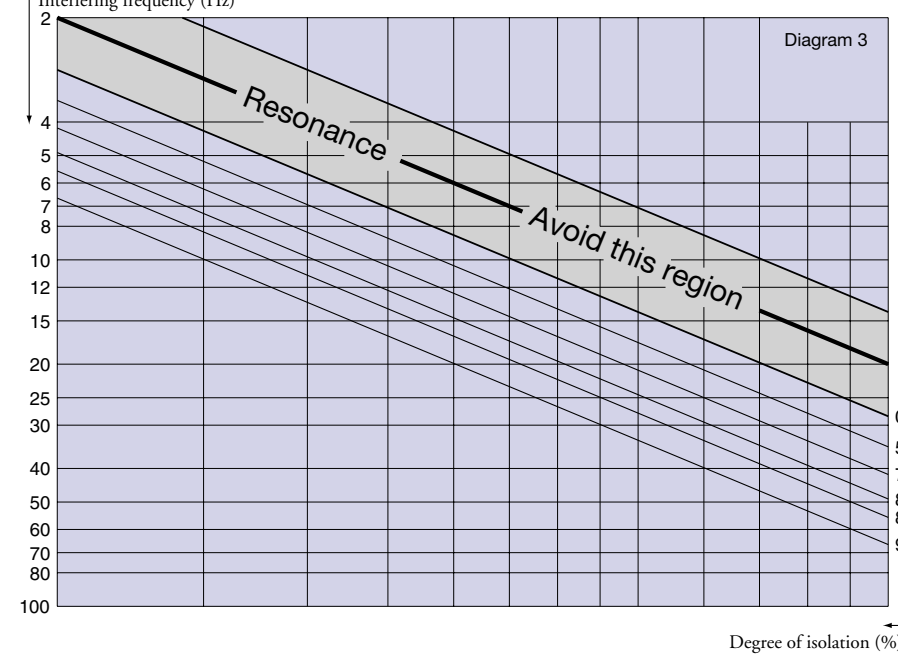
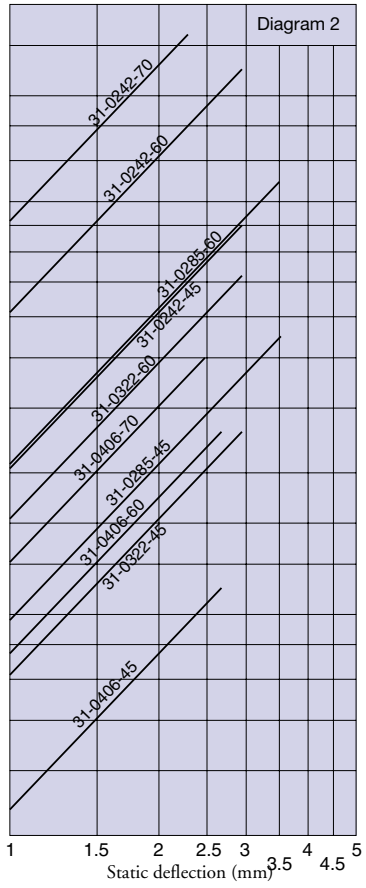
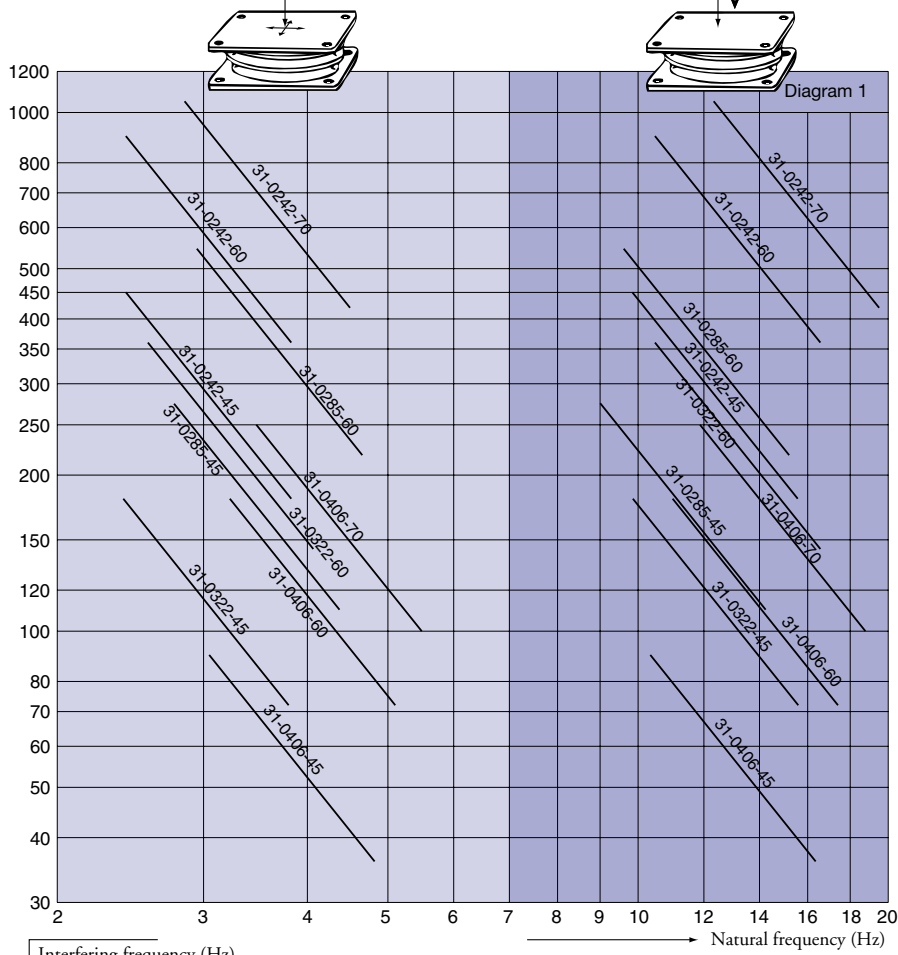
Rectangular SAW mountings		Dimensions in mm									Max load in	Max load in	Weight
Type	Part no.	A	B	K	H	D	d	t	G	L	compression (kg)	shear (kg)	(kg)
31-0322-45	10-00658-01	89	57	108	43	63.5	11	5			180	50	0.65
31-0322-60	10-00659-01	89	57	108	43	63.5	11	5			360	75	0.65
31-0242-45	10-00648-01	146	57	168	43	127	11	5			450	120	1.1
31-0242-60	10-00651-01	146	57	168	43	127	11	5			900	150	1.1
31-0242-70	10-00652-01	146	57	168	43	127	11	5			1050	150	1.1
31-0406-45	10-00661-01	74.5	41	89	36	54	6.5	2.5	M8	14	90	40	0.23
31-0406-60	10-00971-01	74.5	41	89	36	54	6.5	2.5	M8	14	180	70	0.23
31-0406-70	10-00663-01	74.5	41	89	36	54	6.5	2.5	M8	14	250	90	0.23
31-0285-45	10-00656-01	146	57	168	43	127	11	5			275	150	0.9
31-0285-60	10-00657-01	146	57	168	43	127	11	5			546	150	0.9
3"COMP-55	10-00067-01	146		182	76		13	7.5				220	3.4
3"COMP-60	10-00065-01	146		182	76		13	7.5				280	3.4
3"COMP-65	10-00066-01	146		182	76		13	7.5				340	3.4

Note: The natural frequencies and degrees of isolation are based on dynamic characteristics of the mountings.

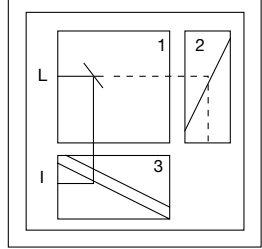
Load per mounting (kg)

Horizontal vibration Vertical load

Vertical vibration Vertical load



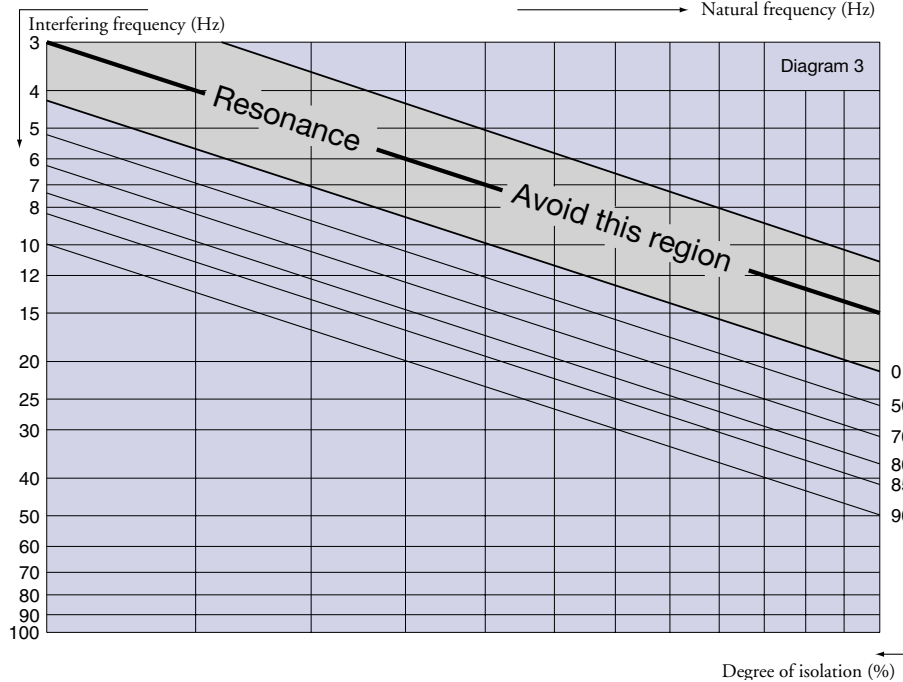
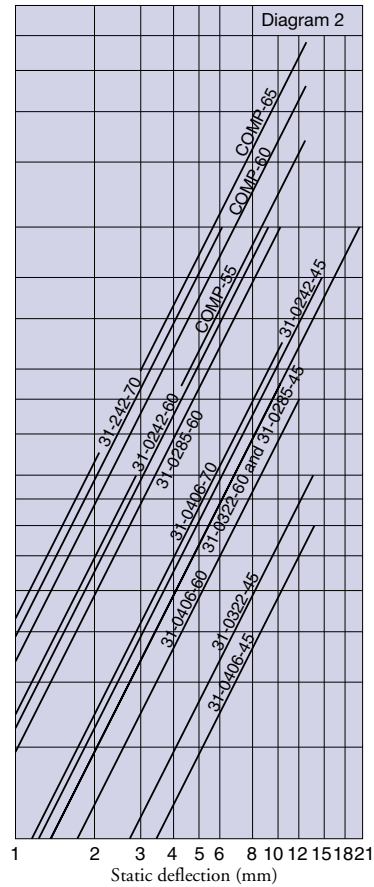
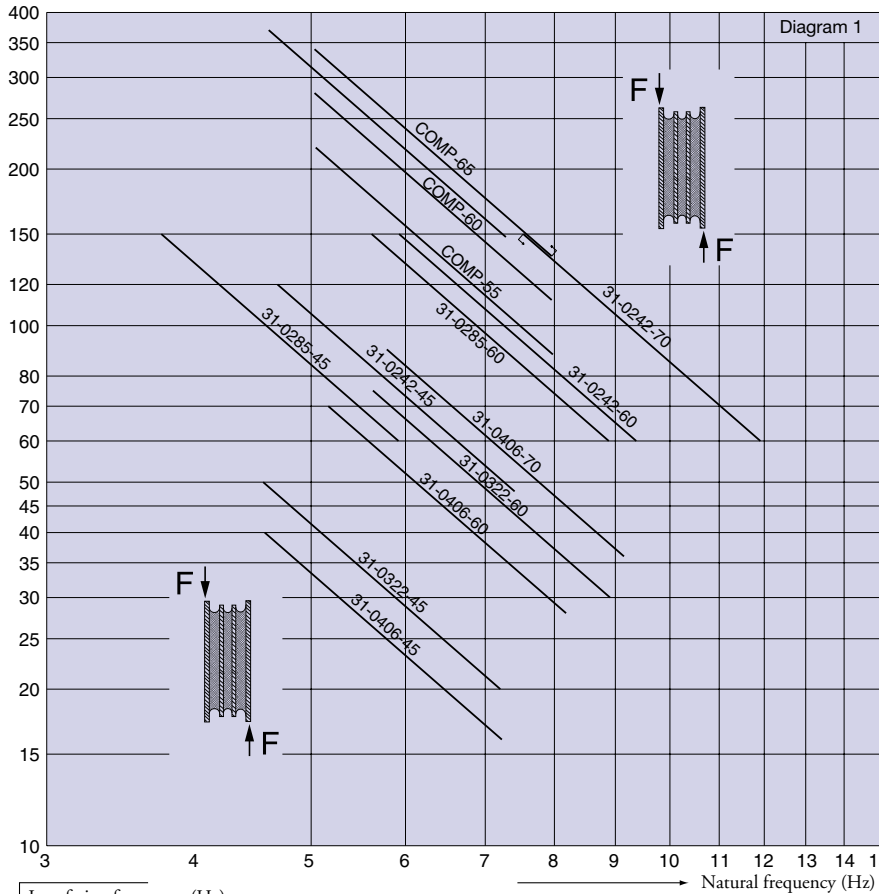
To select correct mounting, following data are needed:
 1) Load per mounting (kg)
 2) Interfering frequency (Hz)
 ($\text{Hz} = \text{rpm} / 60$)
 Select correct load line in diagram 1 and correct interference line in diagram 3. The load line intersects with required type of mounting.
 Connect this intersection point vertically down to the interference line in diagram 3. Here, on the sloping curve, the isolation degree is indicated.
 For static deflection, see diagram 2.



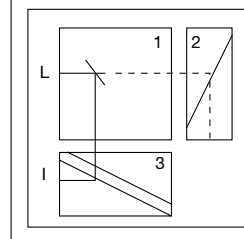
Rectangular SAW Mountings

Note: The natural frequencies and degrees of isolation are based on dynamic characteristics of the mountings.

Load
per mounting (kg)



To select correct mounting, following data are needed:
 1) Load per mounting (kg)
 2) Interfering frequency (Hz)
 (Hz = rpm / 60)
 Select correct load line in diagram 1 and correct interference line in diagram 3.
 The load line intersects with required type of mounting.
 Connect this intersection point vertically down to the interference line in diagram 3.
 Here, on the sloping curve, the isolation degree is indicated.
 For static deflection, see diagram 2.





Features

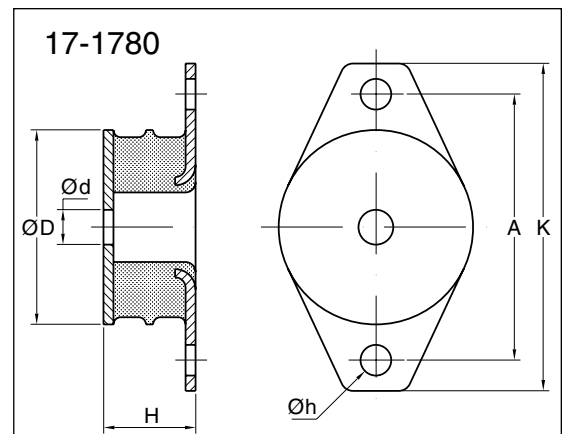
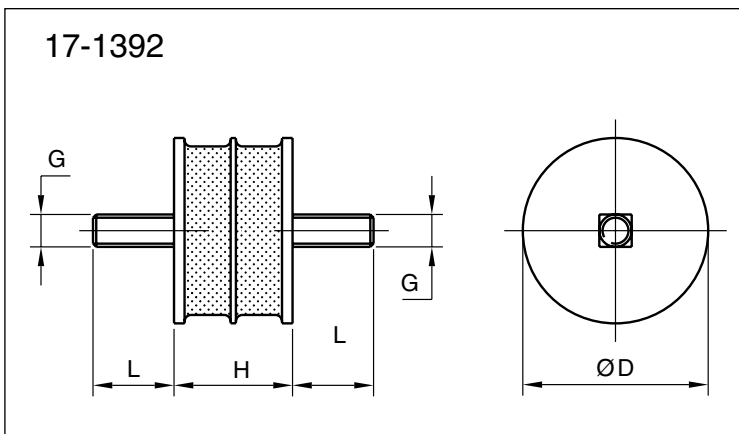
The metal interleaf incorporated (17-1392) in the design provides a higher compression to shear stiffness ratio, thereby increasing the load capacity in the compression or combined compression and shear modes.

The 17-1780 engine mounting features a void in the rubber section to allow the use of a central snubber device.

Metalastik[®] type Circular SAW Mountings

Used in a variety of industrial applications including vibratory rollers and small screens or for the suspension of smaller type I.C. engines.

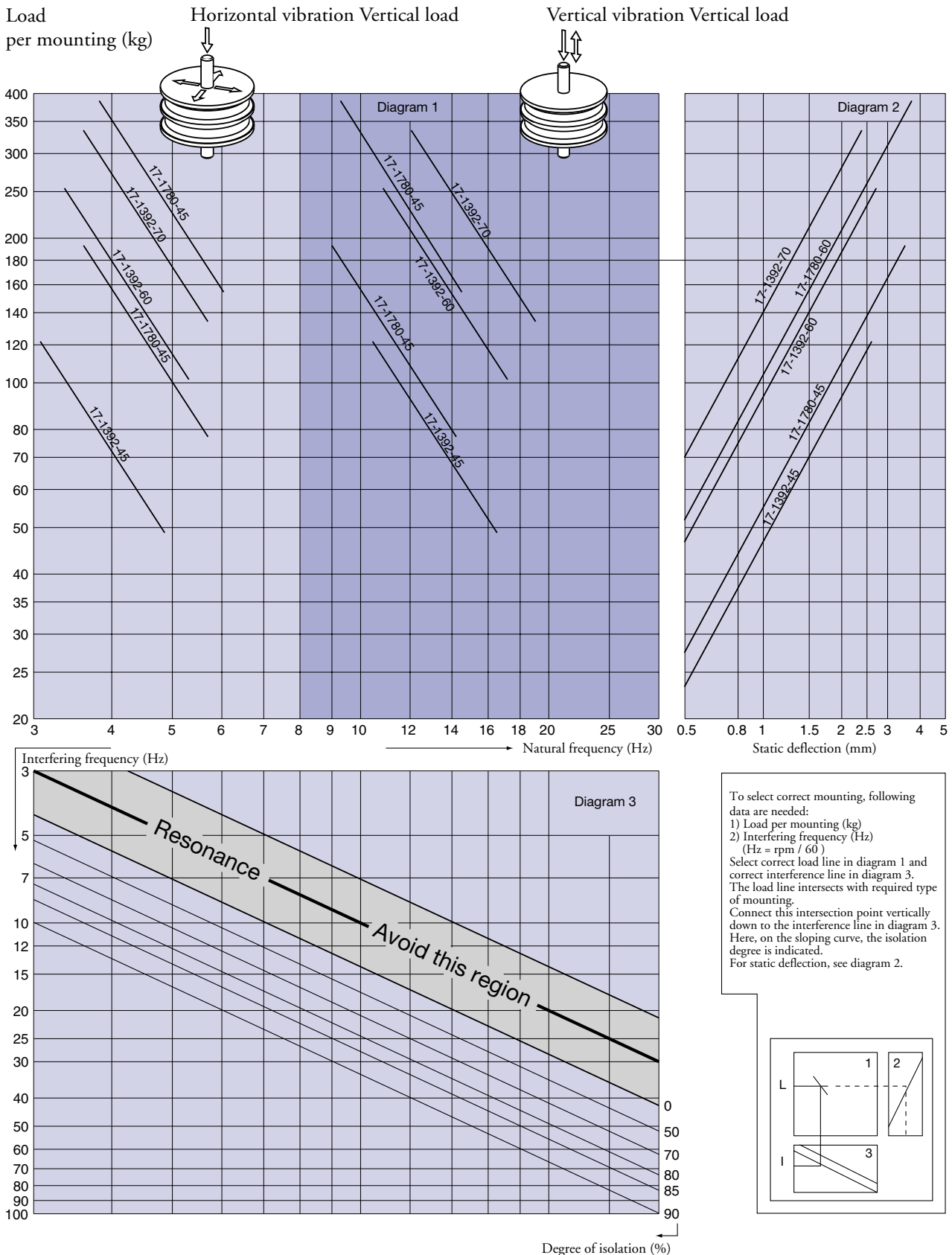
17-1780 can be fitted with a rebound washer for mobile applications.



Circular SAW mountings		Dimensions in mm								Max load in	Max load in	Weight
Type	Part no.	D	H	L	G	A	K	d	h	compression (kg)	shear (kg)	(kg)
17-1392-45	10-00492-01	57	37	25	M10					120	90	0.28
17-1392-60	10-00493-01	57	37	25	M10					250	90	0.28
17-1392-70	10-00494-01	57	37	25	M10					330	90	0.28
17-1780-45	10-00577-01	95	45			130	160	17	15	190	135	0.81
17-1780-60	10-00578-01	95	45			130	160	17	15	380	160	0.81

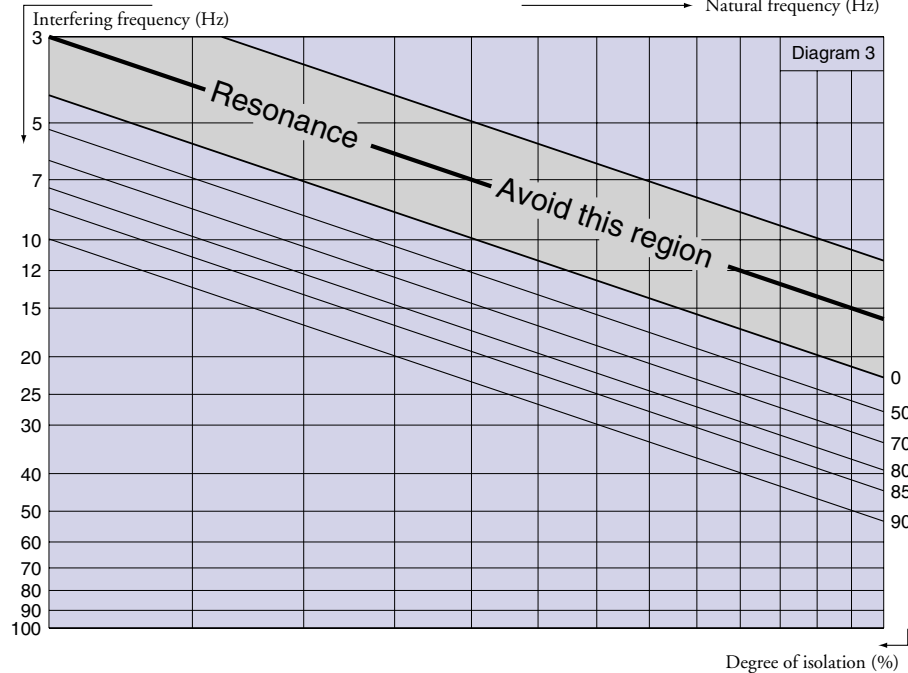
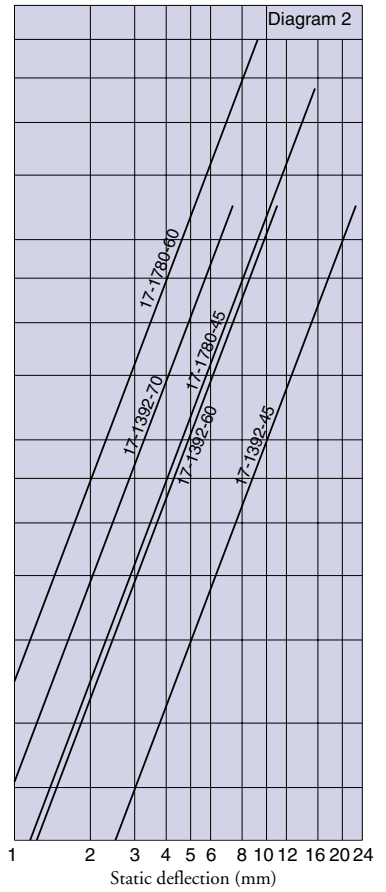
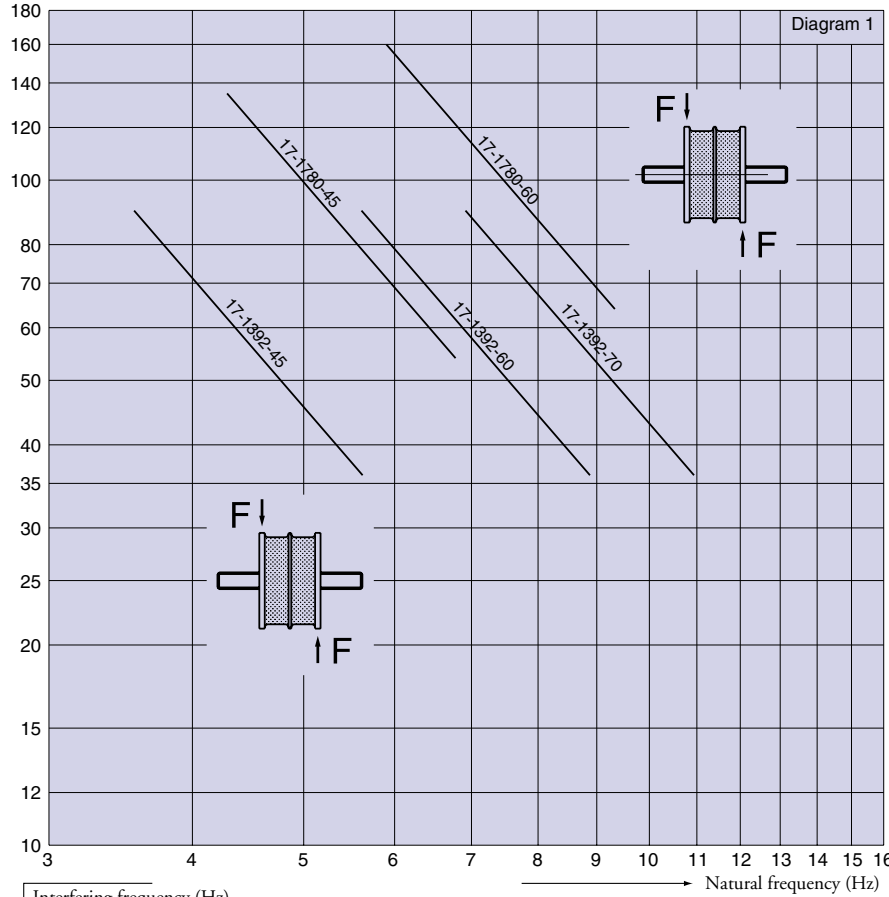
● Circular SAW Mountings

Note: The natural frequencies and degrees of isolation are based on dynamic characteristics of the mountings.



Note: The natural frequencies and degrees of isolation are based on dynamic characteristics of the mountings.

Load
 per mounting (kg)



To select correct mounting, following data are needed:
 1) Load per mounting (kg)
 2) Interfering frequency (Hz)
 ($\text{Hz} = \text{rpm} / 60$)
 Select correct load line in diagram 1 and correct interference line in diagram 3. The load line intersects with required type of mounting.
 Connect this intersection point vertically down to the interference line in diagram 3. Here, on the sloping curve, the isolation degree is indicated.
 For static deflection, see diagram 2.

